

## EXPERIENCE THE BUTLER DIFFERENCE.

Butler Manufacturing™ offers several competitive advantages that have enabled us to remain the leader in the building systems industry for more than 100 years. We call this The Butler Difference, and you'll find it in details such as—

**Butler Builders**—offering single-source responsibility and complete construction services. Find your local Butler Builder® at [www.butlerbuilder.com](http://www.butlerbuilder.com).

**High-performance products**—such as acrylic-coated galvanized C/Z purlins and girts, the unique MR-24® seam that virtually

eliminates roof leaks, and structural and wall systems that integrate easily with conventional building materials.

**Design integrity**—advanced technology and processes are applied to assure quality, reduce production time and lower costs. Butler also maintains the high quality design and manufacturing standards required of an IAS – accredited fabricator.

**Weathertightness warranties**—available 25-year warranties for perforation protection and weathertightness are a testament to the performance that a Butler® building system offers.



GENERAL CONSTRUCTION  
CONSTRUCTION MANAGEMENT  
DESIGN / BUILD

10995 Main Street  
Clarence New York 14031  
Phone: 716-634-9994  
Fax: 716-633-6956

ContactUs@PiconeConstruction.com  
[www.PiconeConstruction.com](http://www.PiconeConstruction.com)



## BUTLER® CONVENTIONAL HYBRID BUILDING SOLUTIONS

*Design driven to achieve an optimal building solution.*



BUILDING IN A NEW LIGHT™

Butler Manufacturing  
Kansas City, MO  
816-968-3000

Butler Buildings Canada  
Burlington, ON, Canada  
905-332-7786

[www.butlermfg.com](http://www.butlermfg.com)



Butler® building products are constantly being improved; therefore, the information contained herein is subject to change without notice. Before finalizing project details, contact your nearest Butler Builder® or Butler Manufacturing™ for the latest information.

Kynar 500® is a registered trademark of Arkema. Hylar 5000® is a registered trademark of Solvay Solexis. Fluoropon® is a registered trademark of The Valspar Corporation. USGBC logo is a registered trademark owned by the U.S. Green Building Council and is used by permission.

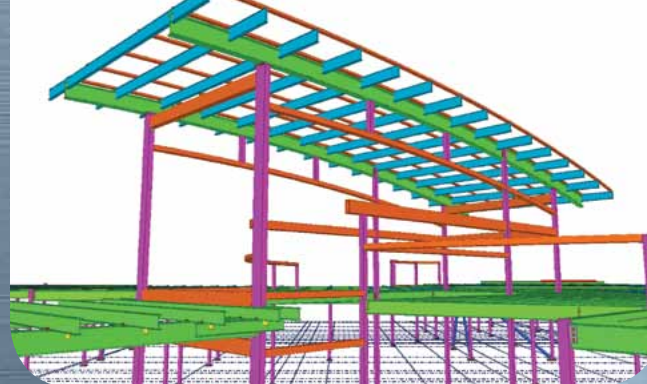
©2012 BlueScope Buildings North America, Inc. All rights reserved. Butler Manufacturing™ is a division of BlueScope Buildings North America, Inc. Find your independent Butler Builder® at [www.butlerbuilder.com](http://www.butlerbuilder.com).

Form No. 5447 05/12



BUILDING IN A NEW LIGHT™





# HYBRID BUILDING SOLUTIONS

## A FULLY INTEGRATED BUILDING SOLUTION

A Hybrid building solution from Butler integrates three types of primary structural steel (mill beam, three plate members and truss girders or hybrid combinations) with secondary structural members – either Zee purlins, truss purlins or bar joists. Mezzanine or multi-story floor members are also included in a comprehensive structural design.

The Butler Hybrid building solution integrates any wall material – such as masonry, EIFS, concrete or our metal wall systems – with the structural system to create the desired architectural effect.

Butler's high performance, standing-seam metal roof system – the MR-24® roof system – is easily integrated into a hybrid building design. The MR-24 system has a documented life cycle of up to forty years and is virtually maintenance free. The Butler Hybrid building solution can also accommodate building designs that call for a roof solution using metal deck and an appropriate membrane roofing material.

## DESIGN DRIVEN TO ACHIEVE AN OPTIMAL SOLUTION

The preliminary design stage is the critical portion of your project. That's when our

involvement in the earliest stages of project planning allows us to arrive at the most cost effective solution – a true optimal building solution. Utilizing Tekla software, we efficiently detail complex structural designs and provide BIM interface if required.

## INTEGRITY MEANS EVERYTHING

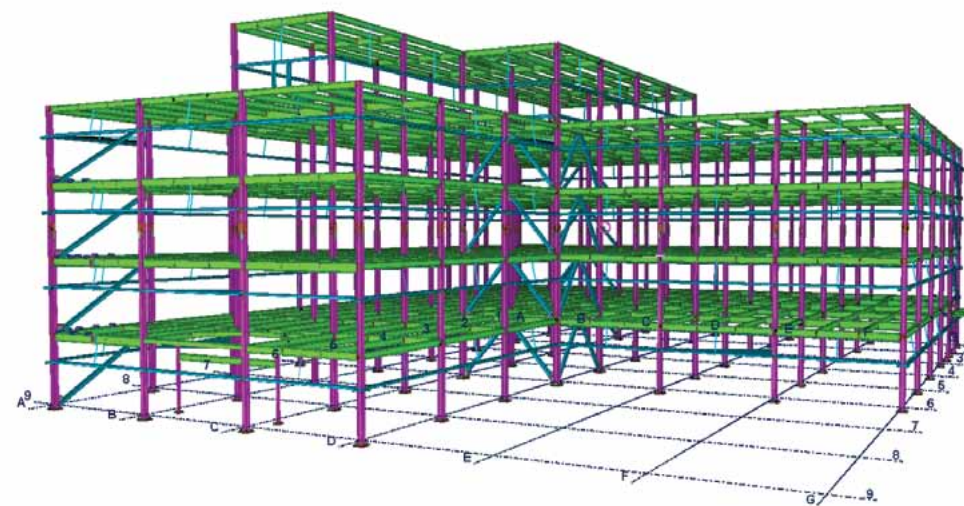
Butler Manufacturing is an IAS-accredited steel fabricator. The IAS accreditation program

recognizes manufacturers who fabricate safe, high-quality structures.

The rigorous certification process scrutinizes all of the things that are important to you in selecting a manufacturer, including raw material purchasing, welding practices, material receiving, quality control measures, and overall fabrication quality assurance. As a buyer, you should always specify an IAS-accredited fabricator and require a copy of the accreditation certificate. It's your symbol of quality assurance.

## A BUILDER YOU CAN TRUST

Your Butler Builder® is a construction professional who can handle every phase of your construction project. Only builders of the highest integrity and reputation are selected to become Butler Builders. They will work with you to provide the building system you want, on time and within your budget.



Utilizing Tekla software, we efficiently detail complex structural designs and provide building information modeling (BIM) interface when required.



BUILDING IN A NEW LIGHT™

